

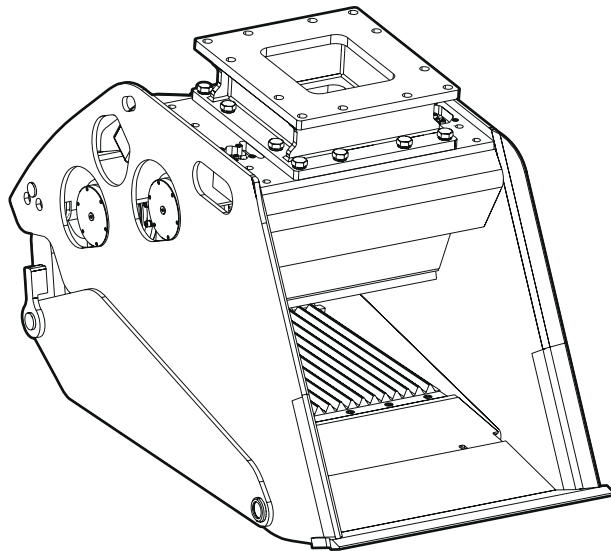
# BC 5300

---

## Spare parts list

### Bucket crusher

BC 5300 s/n DEQ179001 -



# General information

This spare parts list applies to the following:

Part number	Description
3363117990	Bucket crusher BC 5300 parallel with intermediate plate
3363123607	Bucket crusher BC 5300 cross with intermediate plate
3363121332	Bucket crusher BC 5300 parallel without intermediate plate
3363123611	Bucket crusher BC 5300 cross without intermediate plate

Use only authorized parts. Any damage or malfunction caused by the use of unauthorized parts is not covered by Warranty or Product Liability. Any unauthorized use or copying of the contents or any part thereof is prohibited. This applies in particular to trademarks, model denominations, part numbers, and drawings.

## Instructions for use

This spare parts list contains no safety regulations and is merely intended to assist in the ordering of spare parts.

For information about operating, servicing, or repairing, the relevant Safety and operating instructions must be consulted at all costs.

Please observe the safety instructions listed in the relevant Safety and operating instructions!

## Instructions for ordering

It is essential to indicate the serial number of the hydraulic attachment when ordering spare parts!

Please note the full identification number of your hydraulic attachment.

Determine the quantity of individual parts which are required and need to be ordered. The order must indicate the following details:

- full identification code of the hydraulic attachment
- required quantity
- part number
- description

Service, repair and wear part kits

Kit list

1

Mechanical

Bucket with intermediate plate

Bucket without intermediate plate

Mobile support parallel

Mobile support cross

Lower support

Inner hydraulic hoses

Optional parts

Tightening torques

Dimensions with intermediate plate

Dimensions without intermediate plate

Hole pattern metric

Hole pattern imperial

3

5

7

9

11

13

15

17

19

20

22

24

Options / accessories

Hydraulic hoses

Optional equipment

26

29

Service, repair and wear part kits Kit list

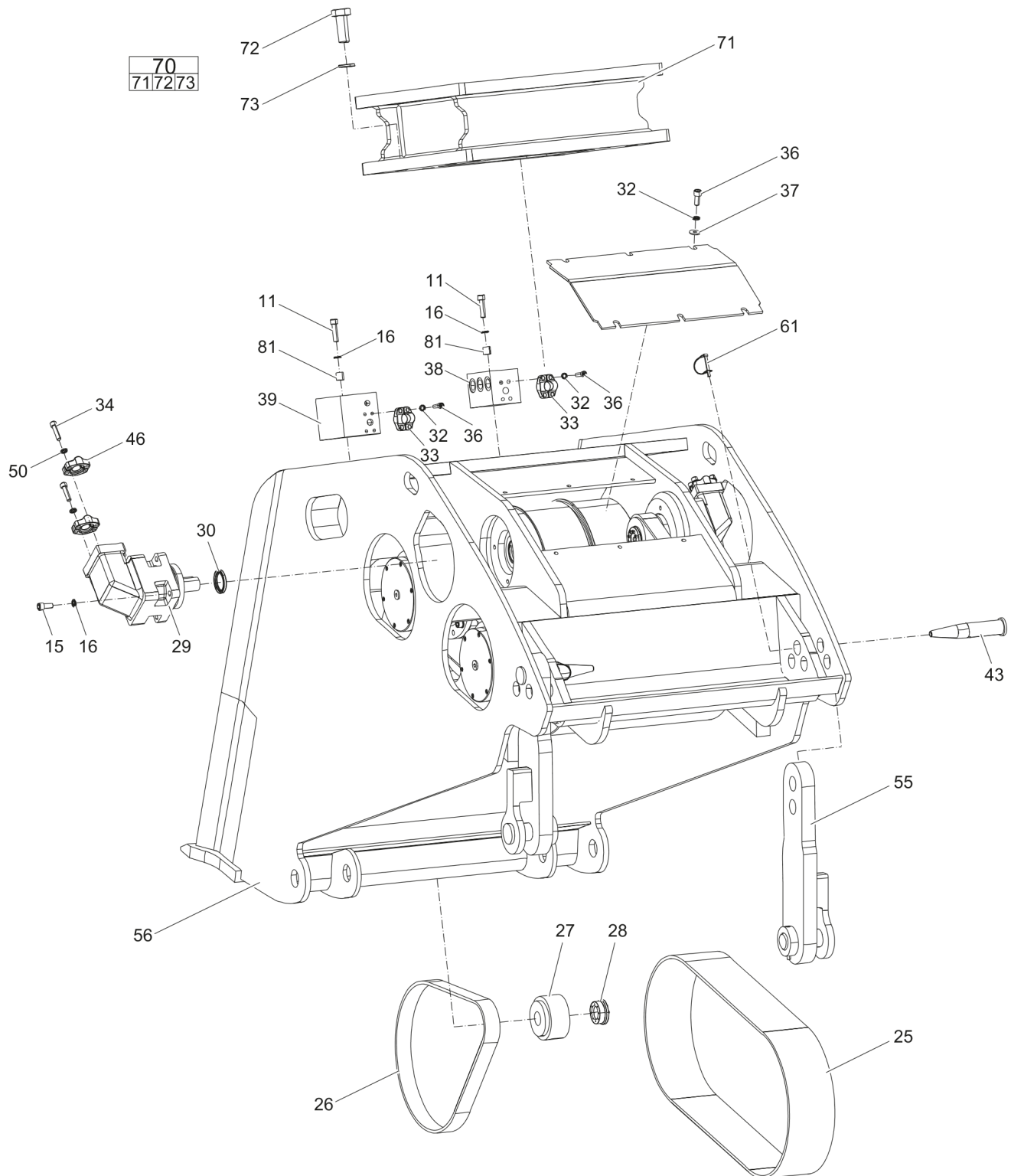
NO EXPLODED VIEW  
AVAILABLE  
FOR THIS BOM

Item	Part No.	Name	Qty	L
KIT	3363119482	Label kit	1	
30	3363119918	Seal kit (Hydraulic motor)	2	
109(110-117)	3363119891	Hydraulic hose kit	1	A
110	3363119903	Hydraulic hose	1	
111	3363119912	Hydraulic hose	1	
112	3363119941	Hydraulic hose	1	
113	3363119942	Hydraulic hose	1	
114	3363119943	Hydraulic hose	1	
115	3363119944	Hydraulic hose	1	
116	3363119945	Hydraulic hose	1	
117	3363119946	Hydraulic hose	1	

Comments for Page: Kit list

A | Inner hydraulic hoses

## Mechanical Bucket with intermediate plate



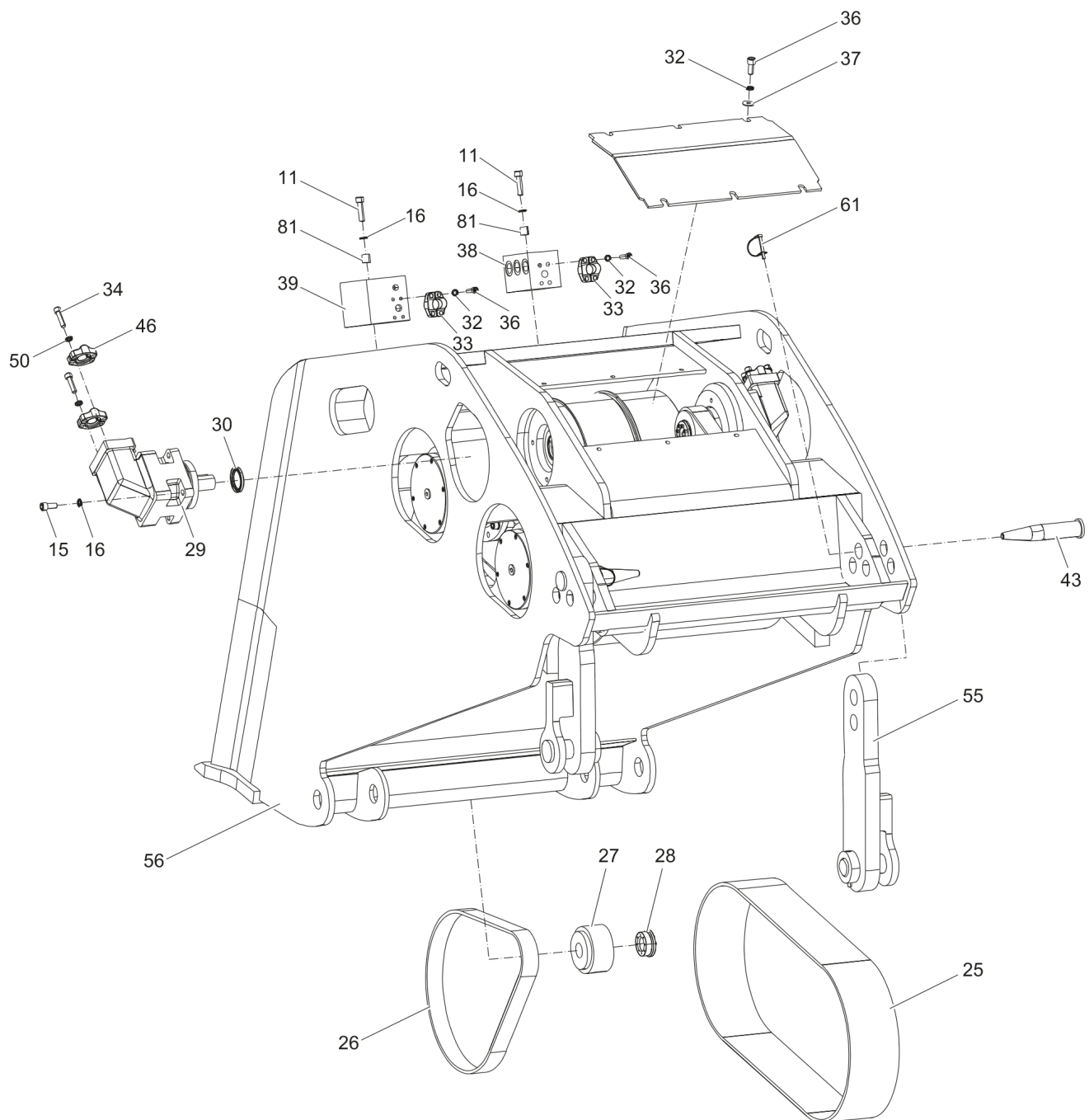
Item	Part No.	Name	Qty	L
4	3363119910	Gear cover	1	
11	3363119911	Allen screw	8	
15	3363118444	Allen screw	8	
16	3361333703	Pair of lock washers	16	
25	3363119913	Main timing belt	1	
26	3363119914	Secondary timing belt	2	
27	3363119915	Gear	2	
28	3363118457	Conical attachment	2	
29	3363119916	Hydraulic motor	2	
30	3363119918	Seal kit (Hydraulic motor)	2	
32	3361850596	Pair of lock washers	14	
33	3361853208	Flange half	4	
34	3363119919	Allen screw	16	
36	3363118434	Allen screw	14	
37	3363119429	Washer	6	
38	3363119430	Valve block	1	A
39	3363119431	Valve block	1	B
43	3363119432	Pin	2	
46	3360992488	Flange half	8	
50	3362261563	Pair of lock washers	16	
55	3363119434	Tensioner fork	2	
56	3363119479	Housing	1	
61	3363118420	Locking pin	2	
70(71-73)	3363119433	Intermediate plate complete	1	
71		Intermediate plate	1	
72	3363119481	Hexagon head screw	20	
73	3361853365	Pair of lock washers	20	
81	3363118472	Spacer	8	

Comments for Page: Bucket with intermediate plate

A | Working valve block

B | Return valve block

## Mechanical Bucket without intermediate plate



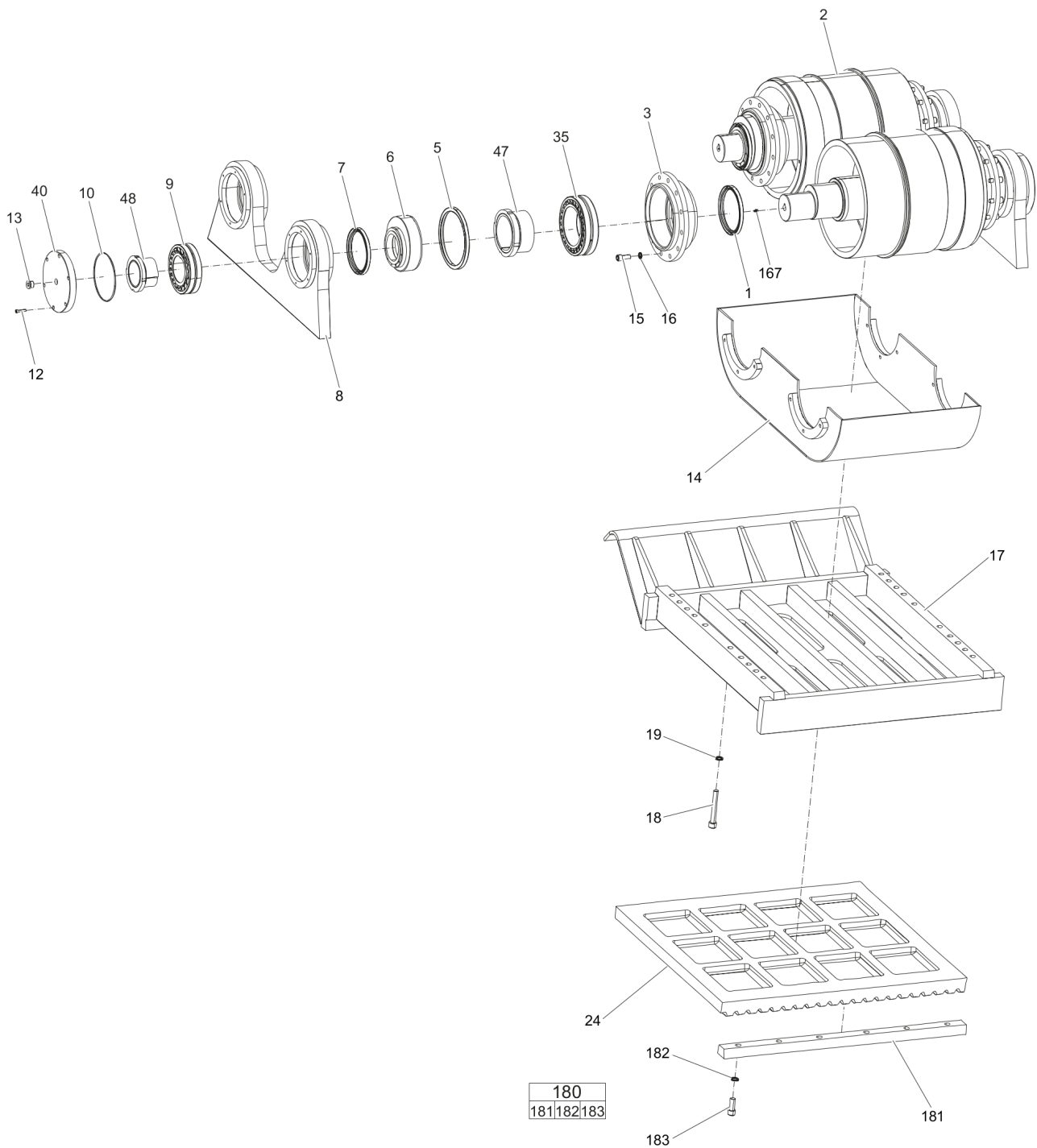


Item	Part No.	Name	Qty	L
4	3363119910	Gear cover	1	
11	3363119911	Allen screw	8	
15	3363118444	Allen screw	8	
16	3361333703	Pair of lock washers	16	
25	3363119913	Main timing belt	1	
26	3363119914	Secondary timing belt	2	
27	3363119915	Gear	2	
28	3363118457	Conical attachment	2	
29	3363119916	Hydraulic motor	2	
30	3363119918	Seal kit (Hydraulic motor)	2	
32	3361850596	Pair of lock washers	14	
33	3361853208	Flange half	4	
34	3363119919	Allen screw	16	
36	3363118434	Allen screw	14	
37	3363119429	Washer	6	
38	3363119430	Valve block	1	A
39	3363119431	Valve block	1	B
43	3363119432	Pin	2	
46	3360992488	Flange half	8	
50	3362261563	Pair of lock washers	16	
55	3363119434	Tensioner fork	2	
56	3363119479	Housing	1	
61	3363118420	Locking pin	2	
81	3363118472	Spacer	8	

Comments for Page: Bucket without intermediate plate

A | Working valve block

B | Return valve block

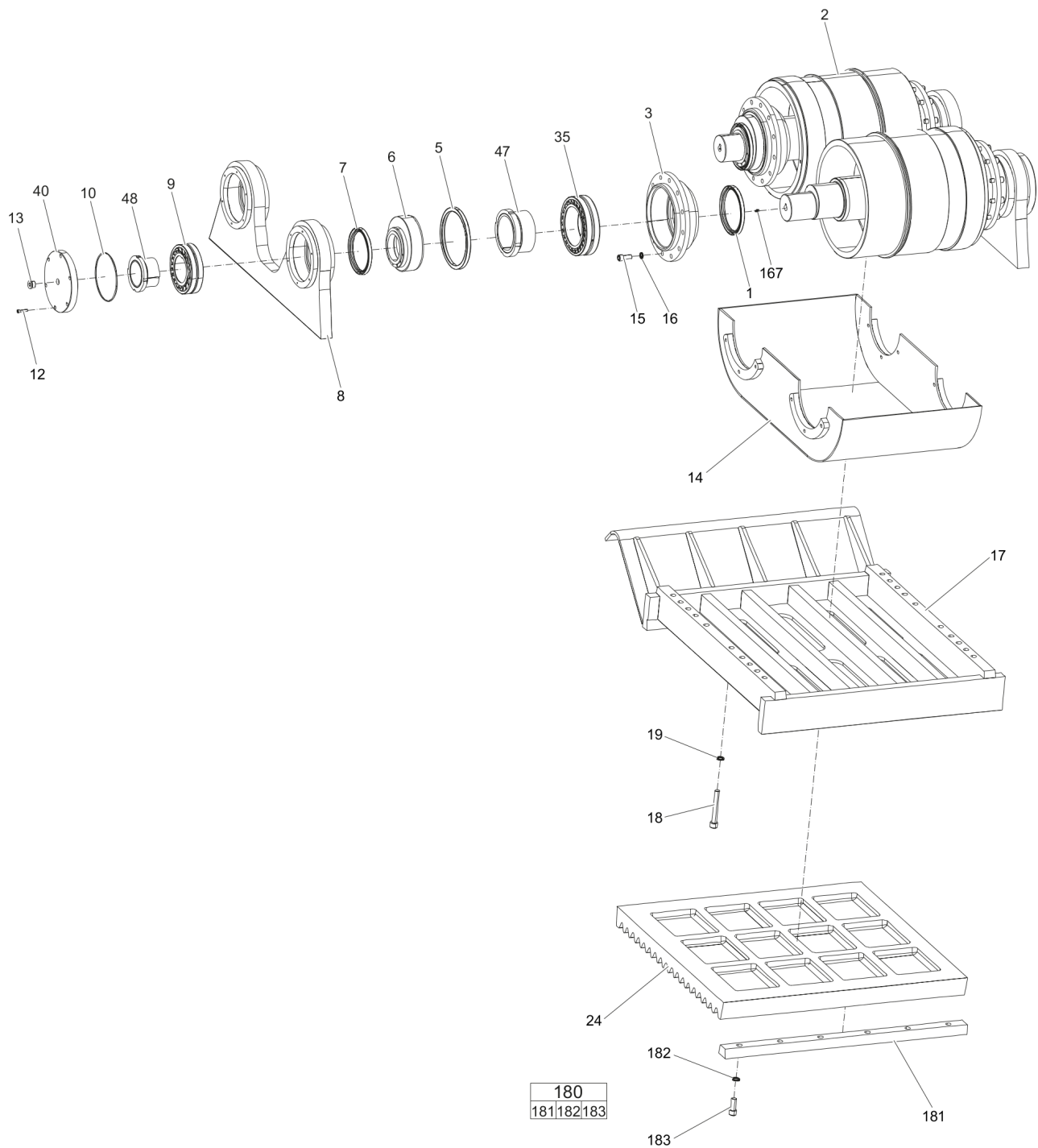


Item	Part No.	Name	Qty	L
1	3363118441	Seal	4	
2	3363119886	Drive shaft	2	
3	3363119888	Flange	4	
5	3363118442	Seal	4	
6	3363118446	Seal support	4	
7	3363118443	Seal	4	
8	3363119893	Bridge part	2	
9	3363119896	Bearing	4	
10	3363118449	Seal	4	
12	0211132700	CAP SCREW	24	
13	3363118394	Allen plug	4	
14	3363119898	Transmission housing	1	
15	3363118444	Allen screw	40	
16	3361333703	Pair of lock washers	40	
17	3363119925	Mobile support	1	
18	3363118440	Allen screw	20	
19	3361850748	Pair of lock washers	20	
24	3363119900	Jaw	1	A
35	3363118460	Bearing	4	
40	3363119938	Cover	4	
47	3363119939	Sleeve	4	
48	3363119940	Sleeve	4	
167	3360209834	Grease nipple	4	
180(181-183)	3363119930	Wedge complete	1	
181		Wedge	1	
182	3361850748	Pair of lock washers	6	
183	3363094902	Allen screw	6	

Comments for Page: Mobile support parallel

A | parallel

## Mechanical Mobile support cross

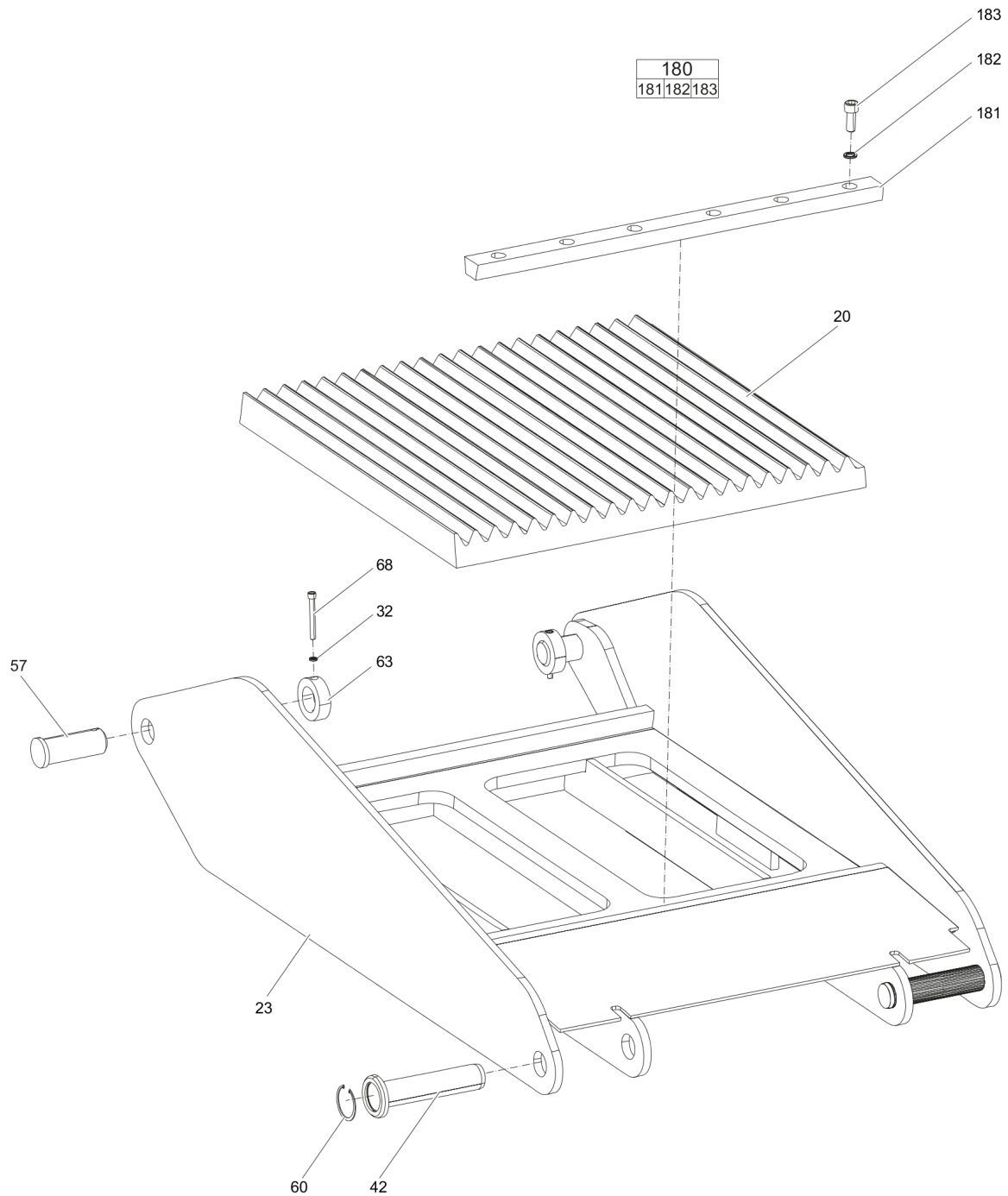


Item	Part No.	Name	Qty	L
1	3363118441	Seal	4	
2	3363119886	Drive shaft	2	
3	3363119888	Flange	4	
5	3363118442	Seal	4	
6	3363118446	Seal support	4	
7	3363118443	Seal	4	
8	3363119893	Bridge part	2	
9	3363119896	Bearing	4	
10	3363118449	Seal	4	
12	0211132700	CAP SCREW	24	
13	3363118394	Allen plug	4	
14	3363119898	Transmission housing	1	
15	3363118444	Allen screw	40	
16	3361333703	Pair of lock washers	40	
17	3363119925	Mobile support	1	
18	3363118440	Allen screw	20	
19	3361850748	Pair of lock washers	20	
24	3363119937	Jaw	1	A
35	3363118460	Bearing	4	
40	3363119938	Cover	4	
47	3363119939	Sleeve	4	
48	3363119940	Sleeve	4	
167	3360209834	Grease nipple	4	
180(181-183)	3363119930	Wedge complete	1	
181		Wedge	1	
182	3361850748	Pair of lock washers	6	
183	3363094902	Allen screw	6	

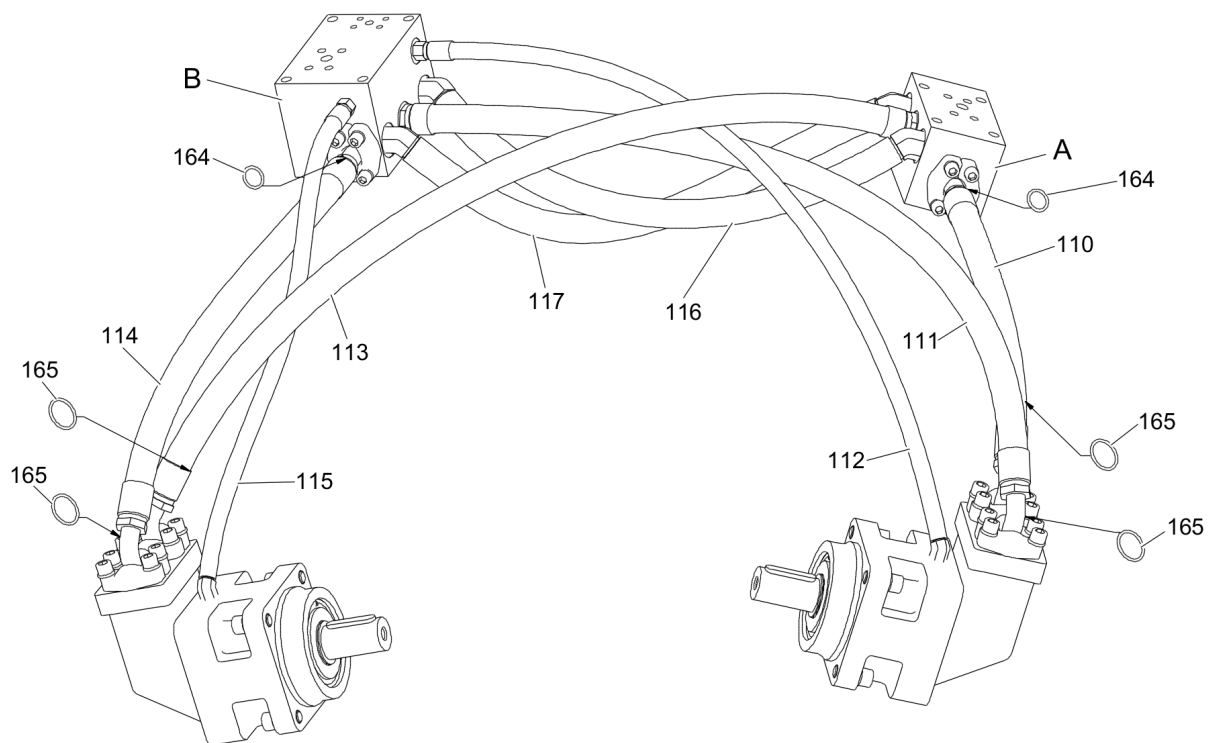
Comments for Page: Mobile support cross

A | cross

## Mechanical Lower support



Item	Part No.	Name	Qty	L
20	3363119900	Jaw	1	
23	3363119906	Lower support	1	
32	3361850596	Pair of lock washers	2	
42	3363119904	Bolt	2	
57	3363119907	Bolt	2	
60	3363119435	Circlip	2	
63	3363119908	Screwed washer	2	
68	3363118483	Allen screw	2	
180(181-183)	3363119930	Wedge complete	1	
181		Wedge	1	
182	3361850748	Pair of lock washers	6	
183	3363094902	Allen screw	6	





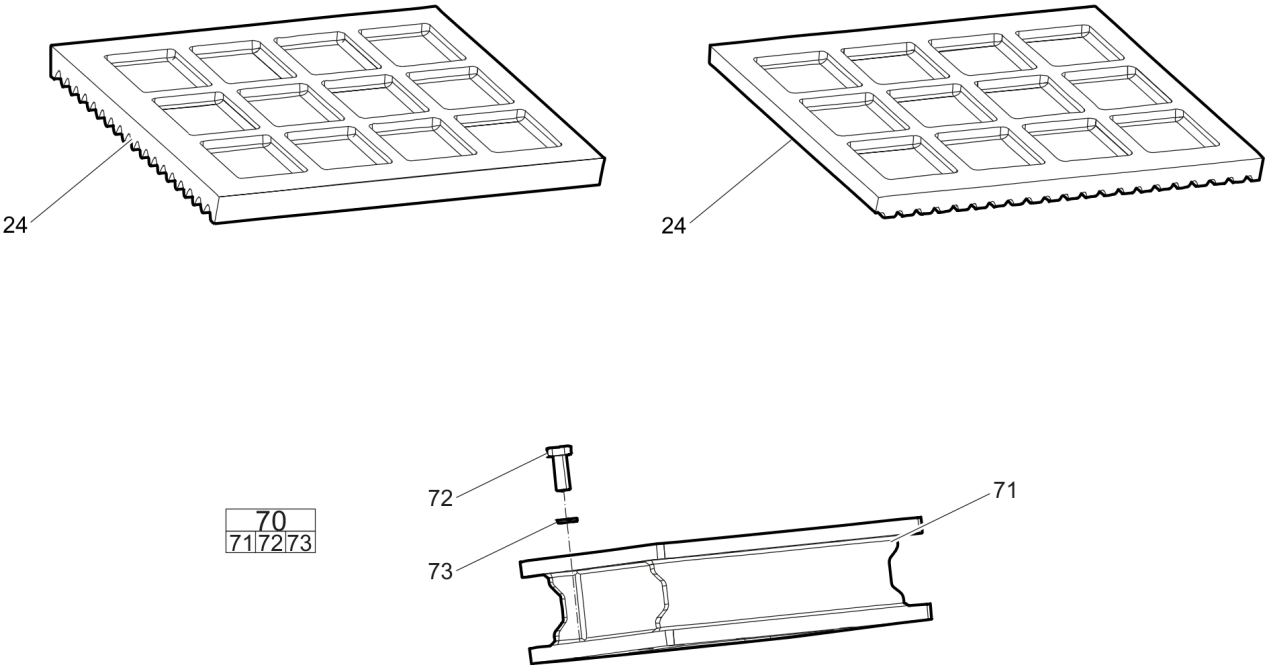
Item	Part No.	Name	Qty	L
109(110-117)	3363119891	Hydraulic hose kit	1	
110	3363119903	Hydraulic hose	1	
111	3363119912	Hydraulic hose	1	
112	3363119941	Hydraulic hose	1	
113	3363119942	Hydraulic hose	1	
114	3363119943	Hydraulic hose	1	
115	3363119944	Hydraulic hose	1	
116	3363119945	Hydraulic hose	1	
117	3363119946	Hydraulic hose	1	
164	3363087665	O-ring	2	
165	3360314372	O-ring	4	

Comments for Page: Inner hydraulic hoses

A | Working valve block

B | Return valve block

Mechanical Optional parts



Item	Part No.	Name	Qty	L
24	3363119937	Jaw	1	A
24	3363119900	Jaw	1	B
70(71-73)	3363119433	Intermediate plate complete	1	
71		Intermediate plate	1	
72	3363119481	Hexagon head screw	20	
73	3361853365	Pair of lock washers	20	

Comments for Page: Optional parts

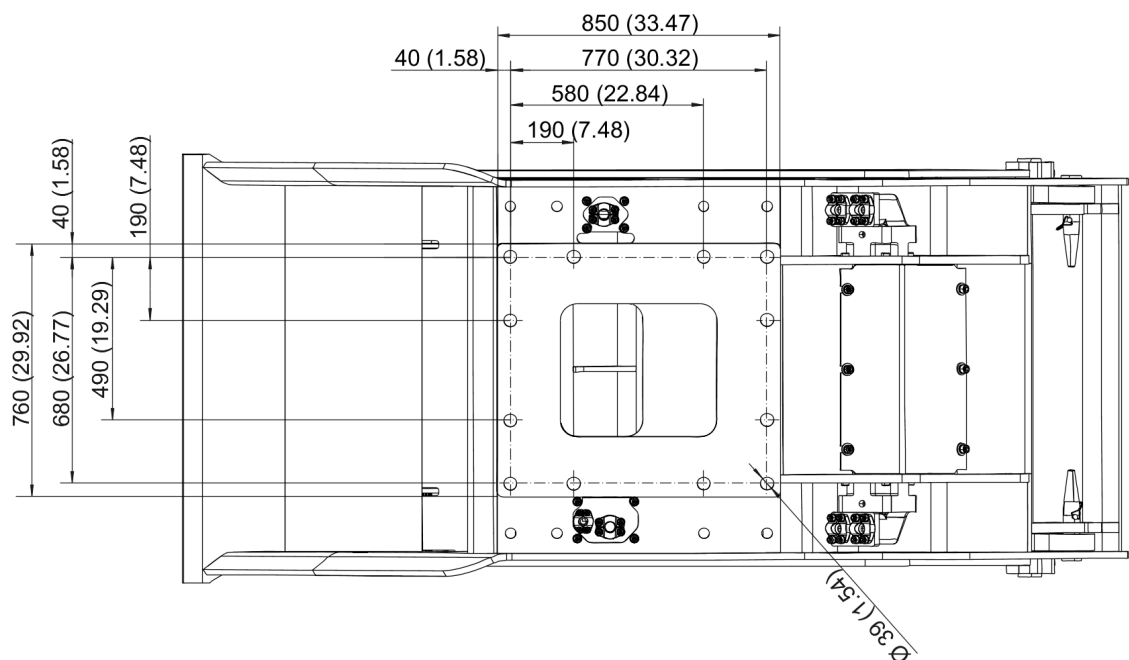
A | cross

B | parallel

Mechanical Tightening torques

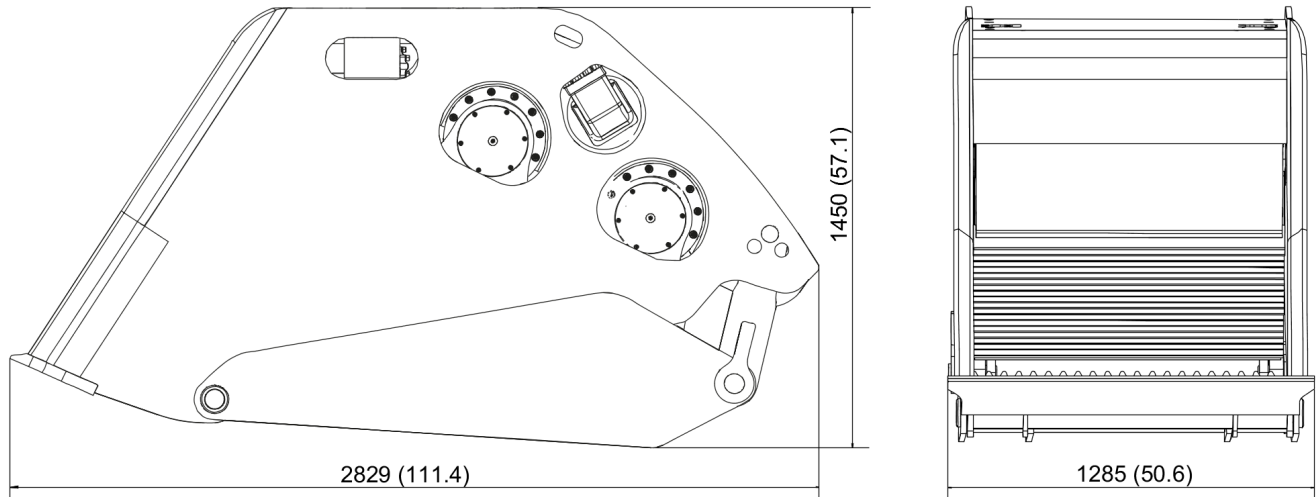
NO EXPLODED VIEW  
AVAILABLE  
FOR THIS BOM

Item	Part No.	Name	Qty	L
Not Shown	-	Bolt size: M8 x 1.25, property class: 8.8 - 26 Nm (19 ft lbf)	-	
Not Shown	-	Bolt size: M10 x 1.5, property class: 8.8 - 53 Nm (39 ft lbf)	-	
Not Shown	-	Bolt size: M12 x 1.75, property class: 8.8 - 120 Nm (89 ft lbf)	-	
Not Shown	-	Bolt size: M14 x 2, property class: 8.8 - 140 Nm (103 ft lbf)	-	
Not Shown	-	Bolt size: M16 x 2, property class: 8.8 - 210 Nm (155 ft lbf)	-	
Not Shown	-	Bolt size: M18 x 2.5, property class: 8.8 - 295 Nm (218 ft lbf)	-	
Not Shown	-	Bolt size: M20 x 2.5, property class: 8.8 - 415 Nm (306 ft lbf)	-	
Not Shown	-	Bolt size: M22 x 2.5, property class: 8.8 - 580 Nm (428 ft lbf)	-	
Not Shown	-	Bolt size: M24 x 3, property class: 8.8 - 710 Nm (524 ft lbf)	-	
Not Shown	-	Bolt size: M27 x 3, property class: 8.8 - 1050 Nm (774 ft lbf)	-	
Not Shown	-	Bolt size: M30 x 3.5, property class: 8.8 - 1420 Nm (1047 ft lbf)	-	
Not Shown	-	Bolt size: M36 x 4, property class: 8.8 - 2400 Nm (1770 ft lbf)	-	

[illegible]

This page intentionally left blank

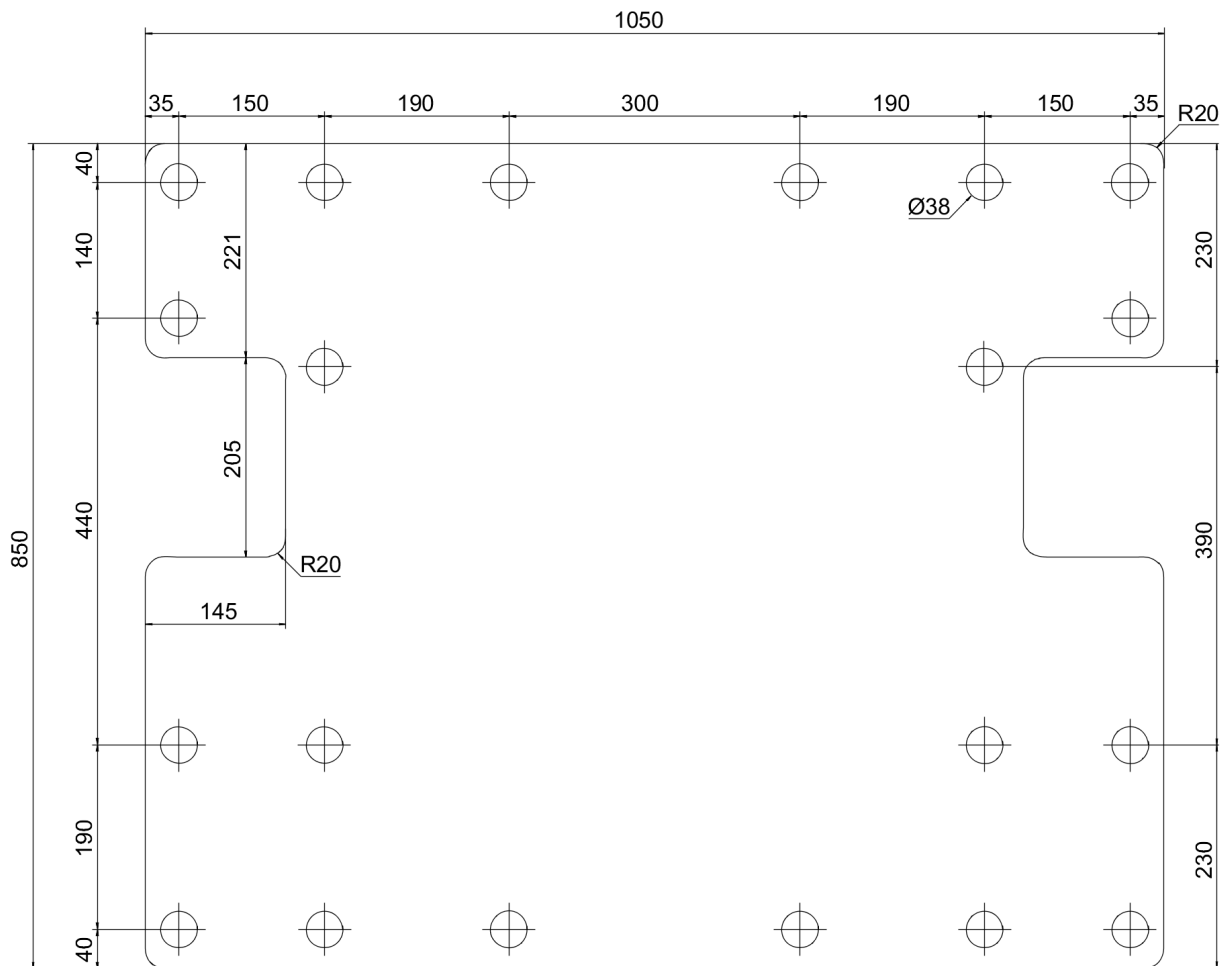
## Mechanical Dimensions without intermediate plate





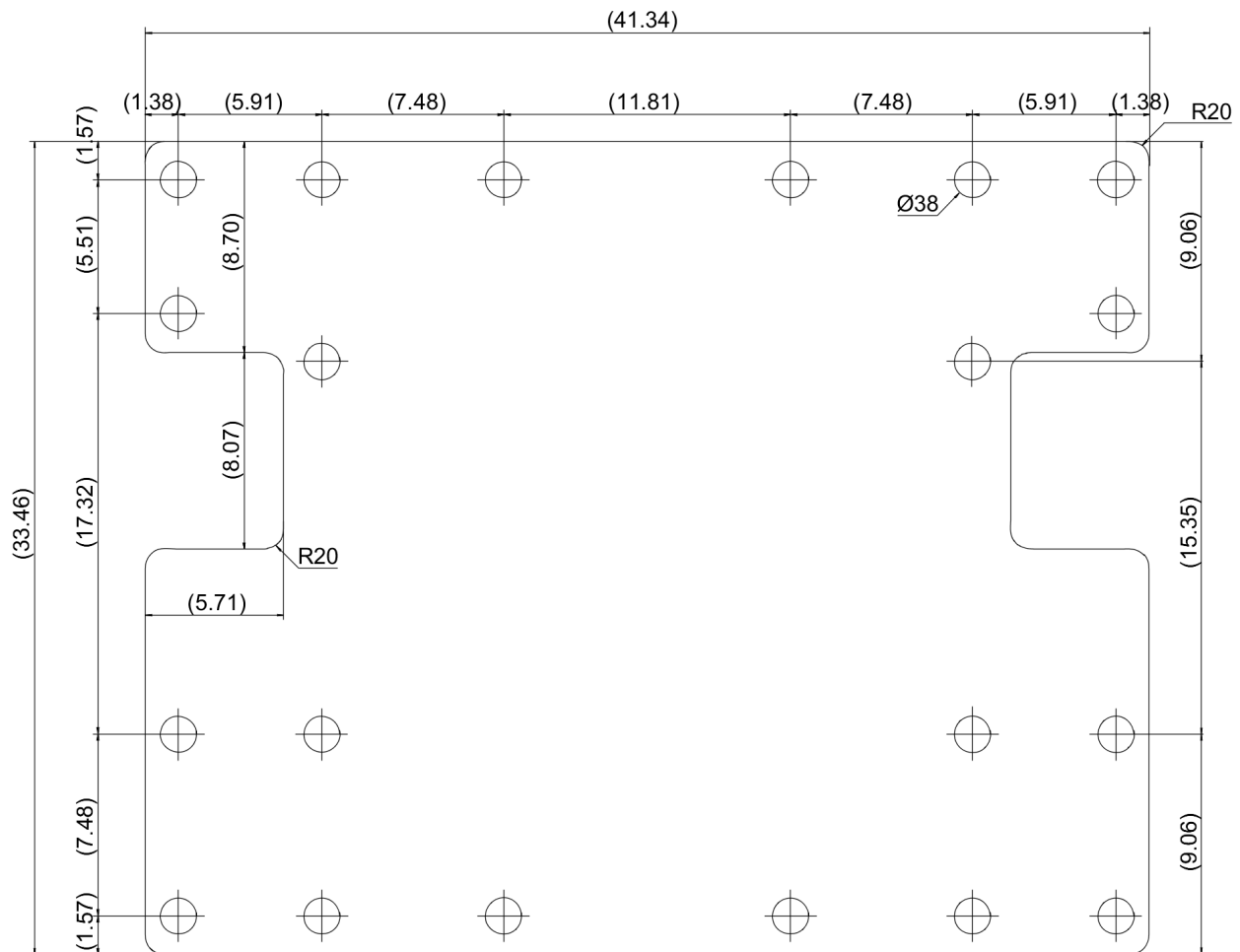
This page intentionally left blank

## Mechanical Hole pattern metric



This page intentionally left blank

## Mechanical Hole pattern imperial



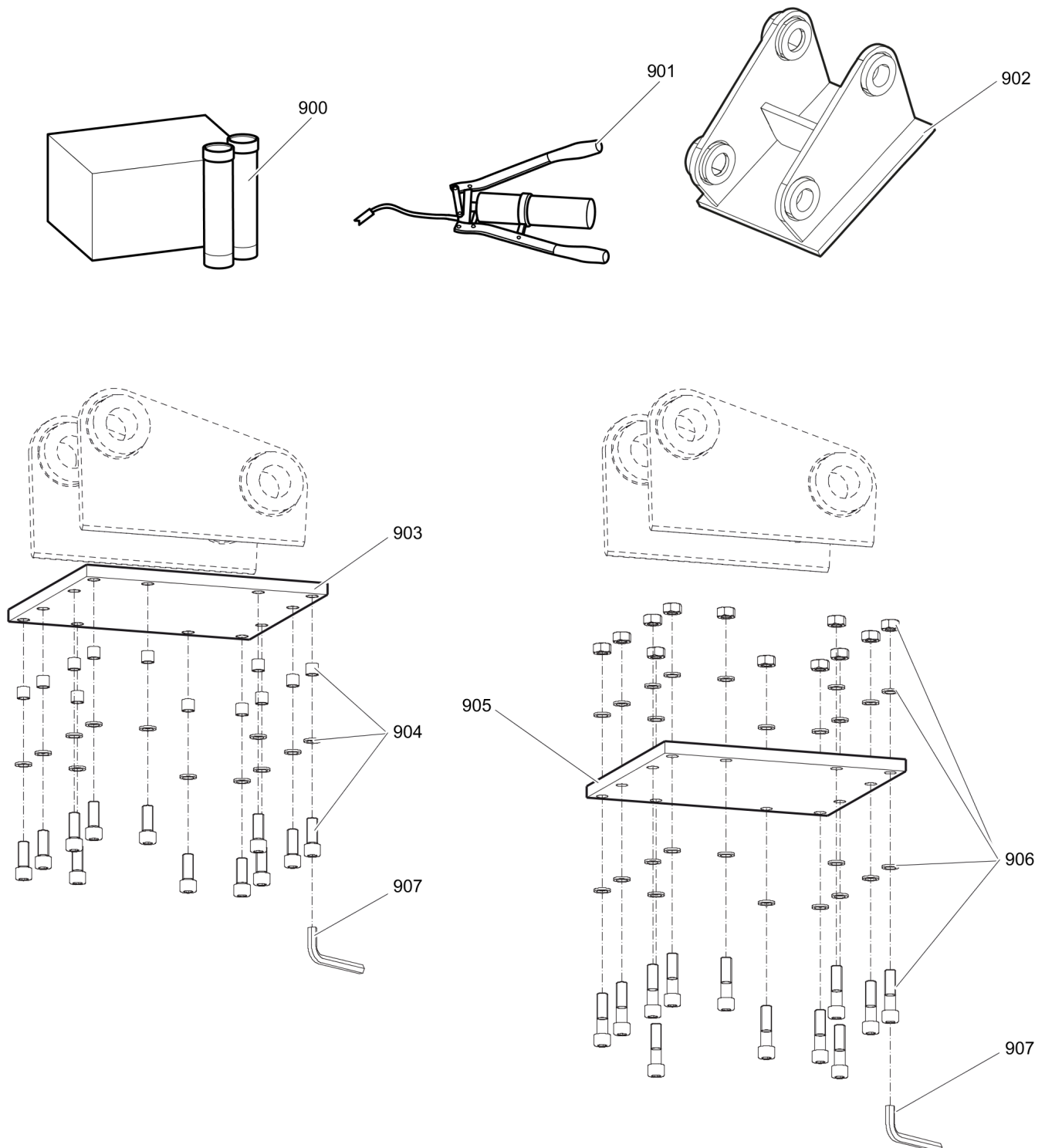
This page intentionally left blank

Options / accessories Hydraulic hoses

NO EXPLODED VIEW  
AVAILABLE  
FOR THIS BOM

Item	Part No.	Name	Qty	L
Not Shown	-	Connecting hose with flange and cap nut for rotation forwards - backwards		
-	3363118841	Hydraulic Hose, I.D. 32 (1.26 in.) flange SAE 45° 1 1/4 in. - 6000 PSI, , 1 5/8 in. JIC, length 2800 mm (110 in.)	2	
Not Shown	-	Connecting hose for leakage line		
-	3363119033	Hydraulic hose with flange, I.D. 19 mm , flange SAE 3/4" 6000 PSI / M36 x 2 conical seal 24°, length 2800 mm (110 in.)	1	

## Options / accessories Optional equipment





Item	Part No.	Name	Qty	L
900	3363122250	Free flow grease cartridge, 12 x 400 g (0.88 lb)	1	A
901	0909107100	LUBRICAT.GUN	1	
902		Adapter plate matching the carrier. Consult the authorized Customer Center/Dealer in your area.	1	
903	3363104727	Base plate with threaded inserts	1	B
904	3363087304	Bolt kit	1	
905	3363104725	Base plate with through borings	1	B
906	3363094580	Bolt kit	1	
907	3360478949	Allen key (27 mm)	1	

Comments for Page: Optional equipment

A | Epiroc Free flow grease

B | suitable for versions with intermediate plate





Any unauthorized use or copying of the contents or any part thereof is prohibited.  
This applies in particular to trademarks, model denominations, part numbers, and drawings.